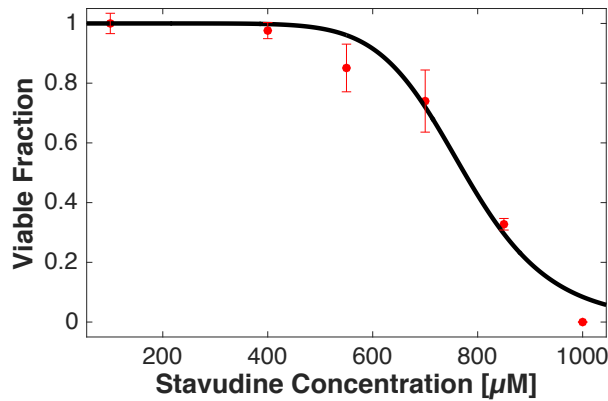


Stavudine (d4T) antiretroviral medication

2D-TOX

Dose dependent evaluation of compound toxicity carried out on E7/E6^{Low} Hepatocytes Line 10-03 (48 years old Caucasian Female). Exposure carried out for 24 hours using LIVE/DEAD staining.



Results:

TC₅₀ = 775 ± 56 µM

Morphological evaluation shows accumulation of cytoplasmic droplets and minor disruption of cell-cell boundaries.

Goodness of fit:

SSE: 0.02106

R-square: 0.9738

Adjusted R-square: 0.9673

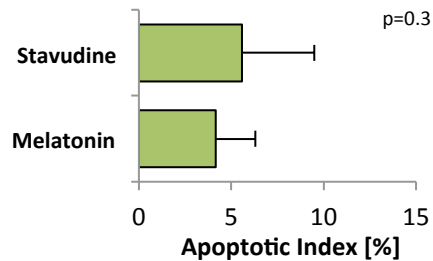
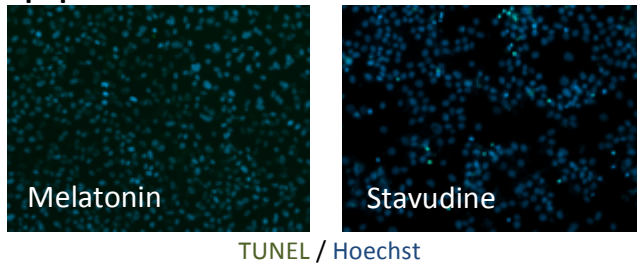
RMSE: 0.07255

Stavudine (d4T) antiretroviral medication

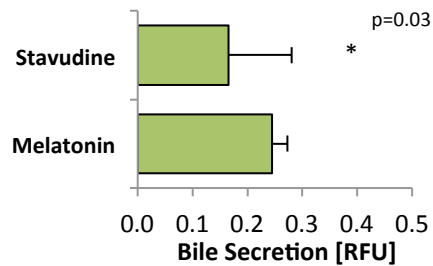
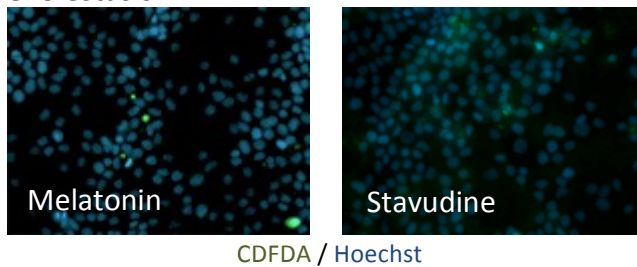
2D-AOP

Quantitative analysis of compound adverse outcome pathway carried out on E7/E6^{Low} Hepatocytes Line 10-03 (48 years old Caucasian Female). Exposure carried out for 24 hours. Results show strong indication of drug-induced steatosis with minor evidence of cholestasis.

Apoptosis



Cholestasis



Steatosis

